

# sTRH.03

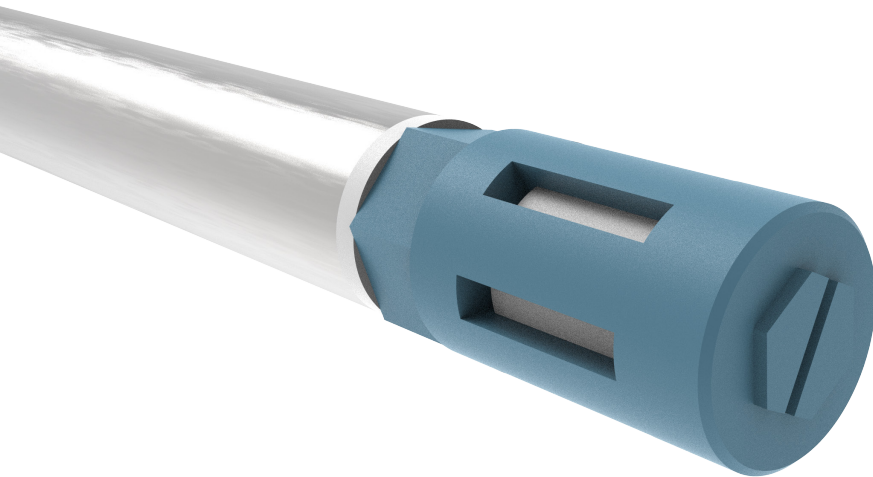
## Temperature & Relative Humidity Transmitter

Reliable measurement for your EMS

The **sTRH.03** is a **combined temperature and relative humidity transmitter** suitable for accurate and reliable measurement needs of dedicated sectors.

The measurement data is available on the **RS-485 Modbus output** which eliminates the measurement problems that may arise from transferring analog signals on the field, provides advantages in installation and commissioning, reduces the cost of wiring.

The **sTRH.03** is a compact sensor solution which is designed for **duct mounting** in different sizes. **sTRH.03** is connected to Modbus master device via serial cable thus provides easy calibration due to its portability.



### Areas of Use



Building Automation and HVAC systems



Pharmaceutical industry



Food and beverage industry



Precision agriculture



Laboratories / Test chambers



Any kind of controlled environment

## General

Measuring Values	Humidity & Temperature
Output Type	RS485 Modbus RTU

## Relative Humidity Measurement

Measuring Range	0..100 %rH
Accuracy	± 1.5 %rH @ 10-90% typ.
Hysteresis	± 1 %rH max.
Resolution	0.1 %rH
Response Time $\tau_{10/90}$	< 20s at still air

## Temperature Measurement

Measuring Range	-10 ...+60 °C
Accuracy	± 0.2 °C @ -10...+60 °C typ.
Resolution	0.1 °C

## Mechanical

Probe	Stainless Steel 316
Probe Connection	with Cable
Cable Gland	PG7 suitable for cable dia 3 to 6.5 mm
Filter Type	PC body, PTFE membrane
Protection Class	IP40
Dimensions	Φ: 16mm L: 30 / 150 / 200 / 250 / 300 / Custom (mm)
Installation Type	Duct

## Outputs

Type	Digital , isolated 2w RS485
Protocol	Modbus RTU
Baud Rate	9600 ... 156000 bps
Max Nodes on BUS	32
Max Cable Length	up to 10 meters
Isolation	RS485 Output is NOT isolated from Supply Voltage & Sensor

## Electrical

Supply Voltage	18 ... 35 VDC
Current Consumption	10 mA max @ 24 VDC
Electrical Protection	Reverse polarity

## Environmental

Measured Media	Air
Working Conditions	0 ... 95 %rH non Condense & -10...+60 °C

## Order Options

	sTRH.03.[probe length]			
[probe length]	[01] - 30 mm	[02] - 150 mm	[03] - 200 mm	
	[04] - 250 mm	[05] - 300 mm	[06] - Custom specified	

## Dimensions

